



Welcomes You To



CO@Work 2020

15 years of CO@Work

2005



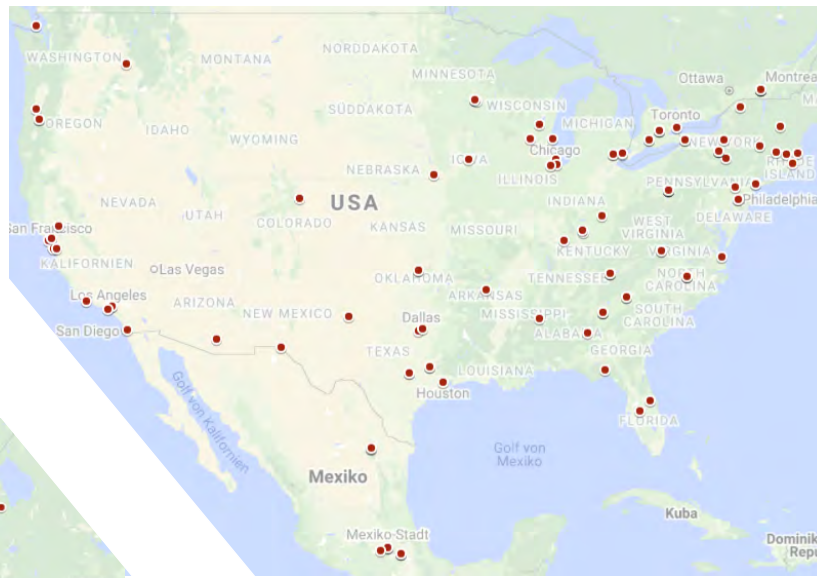
2009



2015

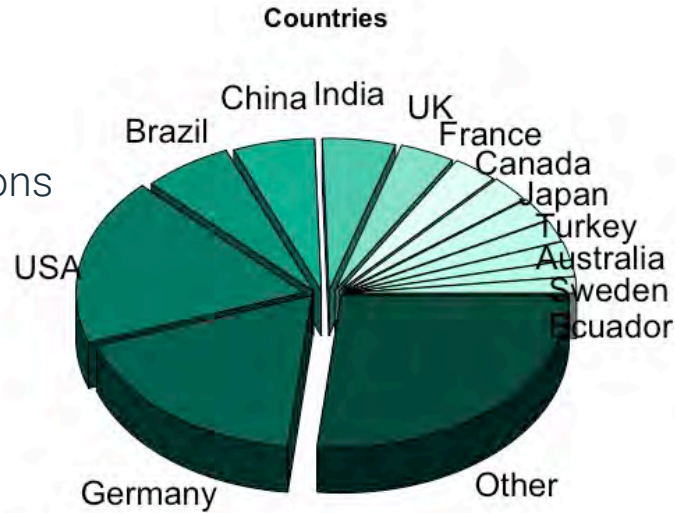






CO@World

- 1154 participants:
 - From 68 countries
 - From ~700 institutions
- Institutions with most participants:



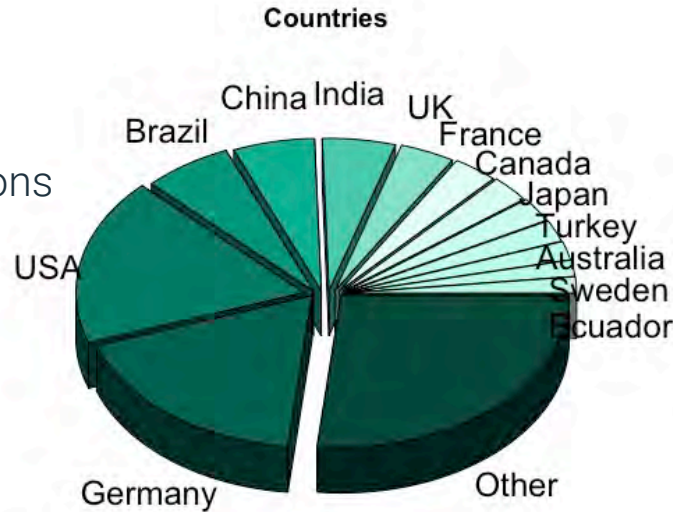
CO@World

- 1154 participants:

- From 68 countries
- From ~700 institutions

- Institutions with most participants:

- RWTH Aachen (35)
- TU Berlin (33)
- TU München (21)
- Escuela Politécnica Nacional (15)
- KU Leuven (15)



CO@Teamwork

Franziska Schlösser



Christian Salzmänn-
Jäckel



Philipp Wellner



Arne Schröder



Gioni Mexi



Oliver Klemp



Matteo Francobaldi



Ingo Meise

CO@Teamwork

Franziska Schlösser



Christian Salzmann-Jäckel



Philipp Wellner



Arne Schröder



Gioni Mexi



Oliver Klemp



Matteo Francobaldi



Ingo Meise

Plus: Leona Schwarzer, Antiona Chmiela, Gabor Braun, Jaab Pedersen, Niels Kempke, Kartikey Sharma, Boro Sofranac, Antje Schultz, Wolfgang Dalitz, Hans-Hermann Freese, Sybille Mattrisch, René Skillen

CO@Teamwork



Timo Berthold



Thorsten Koch



Michael Joswig



Pietro Belotti



Bob Bixby



Anne Kißler



Andrea Lodi



Leona Gottwald



Takahito Tanabe



Marco Lübbecke



Ksenia Bestuzheva



Sebastian Pokutta



Bistra Dilkina



Robert Luce



Robin Schuchmann



Robert Schwarz



Pawel Lichocki



Güvenç Şahin



Ralf Borndörfer

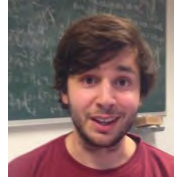
CO@Teamwork



Kai Hoppmann-Baum



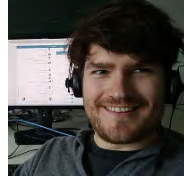
Felix Hennigs



Mark Turner



Yu-Hong Dai



Lovis Anderson



Steve Maher



Christoph Moll



Muming Yang



Julian Hall



Amanda Azevedo



Christina Burt



Oliver Bastert



Marc Pfetsch



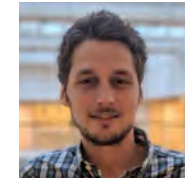
Philipp Christophel



Sabine Seelenmeyer



Christoph Spiegel



Sven Wiese



Luis Torres



Niels Lindner

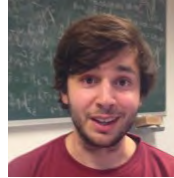
CO@Teamwork



Kai Hoppmann-Baum



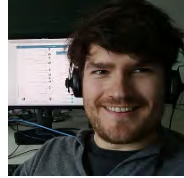
Felix Hennigs



Mark Turner



Yu-Hong Dai



Lovis Anderson



Steve Maher



Christoph Moll



Muming Yang



Julian Hall



Amanda Azevedo



Christina Burt



Oliver Bastert



Marc Pfetsch



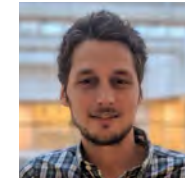
Philipp Christophel



Sabine Seelenmeyer



Christoph Spiegel



Sven Wiese



Luis Torres

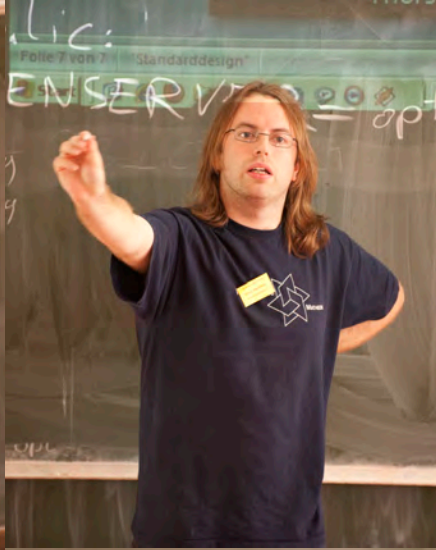


Niels Lindner

Plus: Gregor Hendel, Felipe Serrano, Max Zimmer, Pedro Maristany,
Ricardo Euler, Stephan Schwartz, Erik Mühmer

CO@Work institutions and sponsors







Modellierung: What is that?



„Art is a lie that makes us realize truth“



Olga Koklowa
Picasso's first wife

The model of the
mathematician

The model of the artist

A mathematical model is a lie that helps us see the truth.

I BUY ZAT HONK
THANK YOU ZIB



CO@Work program

Week 1:

- Monday: Basics & Theory
- Tuesday: Deep Dive into MIP Solving
- Wednesday: LP Solving
- Thursday: Other Solving Paradigms, SCIP
- Friday: Machine Learning

Week 2:

- Monday: Solver Day
- Tuesday: Traffic Optimization
- Wednesday: Energy Networks
- Thursday: Decomposition Techniques
- Friday: Industry Day

- Each day has a different flavor: New day, new chance!
- Different focuses week 1 and 2: methodological vs. applications
- Mo/Fr week 2 feature more talks, but no exercise

CO@Workflow

- Videos on YouTube
 - All videos have subtitles
- Watch at your own pace, make breaks, repeat
- Main interaction: Q&A on Zoom
 - Use your chance to communicate with the speakers, take notes while watching videos!
 - In the second week, we have some special Q&A times
- Exercises directly after Q&A, using Jupyter Notebooks
 - Breakout rooms for tutoring, keep links ready
 - Download notebooks after exercise session!!!
- Use Slack to communicate with each other and to post additional questions

Time

09:00 - 9:30 am	Q&A on lectures from previous day
9:30 - 11:00 am	Exercise session
11:00 am	Lecture videos for the NEXT day released
08:00 - 8:30 pm	Q&A on lectures from previous day
8:30 - 10:00 pm	Exercise session